





SC TYPE Attenuator  
Product Specification  
(For External Use)

DOC. No.: CSP-ATSC-00-00		Rev.:B	Page: 2/3
Approved/Date	Checked/Date	Written/Date	
TUNG 12/08/03'	~	WUJUN 12/08/03''	

1.0 Feature:

- Excellent Environmental Stability
- Attenuation Stability
- Excellent Return Loss
- Polarization Insensitive
- Easy Installation
- Telcordia GR-910-core Requirement

2.0 Applications:

- Telecommunications Systems
- Local Area Networks
- CATV
- Subscribe Loop
- Test Equipment
- Optical Fiber Sensors

3.0 Specification:

- Bandwidth: 1310 / 1550±40nm
- Insertion Loss:

Insertion Loss & Range (dB) FOR 1~30 dB	
Insertion Loss	Range
1~5dB	±0.75
6~10dB	±1.0
11~15dB	±15%
16~20dB	
>20dB	

- Return Loss: PC > 45 dB ; APC > 65 dB
- Temperature ranges and humidity:
  - Storage temperature -55°C to +80°C
  - Operating temperature -40°C to +75°C

4.0 Test Condition :

All tests shall be performed as bellow conditions unless otherwise specified.  
Temperature range : 23°C±2°C (73°F±4°F)  
Humidity range : less than 75% RH

5.0 Optical Measurements

The requirement for the optical measurement facility are the following:

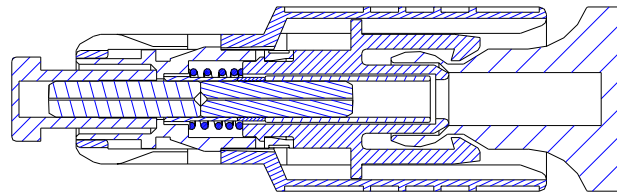
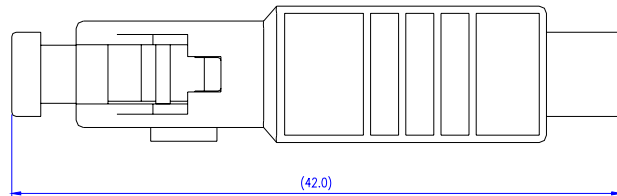
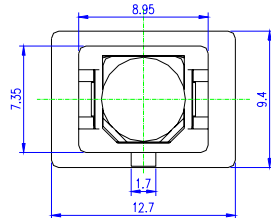
- Capability of measuring optical loss and reflectance at both 1310 nm and 1550 nm.
- Central wavelength of the sources: 1310±20 nm and 1550±20 nm.
- Spectral width of the sources: less then 75 nm.
- Accuracy in measurement of loss: ±0.05 dB.
- Accuracy in measurement of reflectance: ± 2 dB down to at least -60 dB.



SC TYPE Attenuator  
Product Specification  
(For External Use)

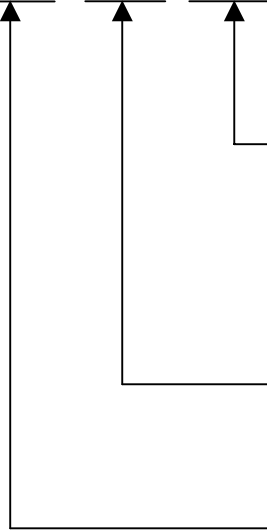
DOC. No.: CSP-ATSC-00-00	Rev.:B	Page: 3/3
Approved/Date TUNG 12/08/03'	Checked/Date ~	Written/Date WUJUN 12/08/03''

6.0 SC Attenuator:



7.0 Order Information:

AT-



04: 1310/1550nm

01: 1 dB  
20: 20 dB.

SC: SC/PC CONNECTOR  
SA: SC/APC CONNECTOR